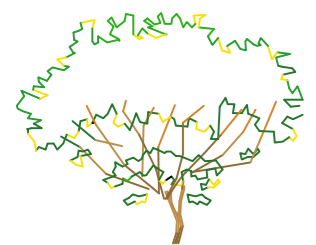
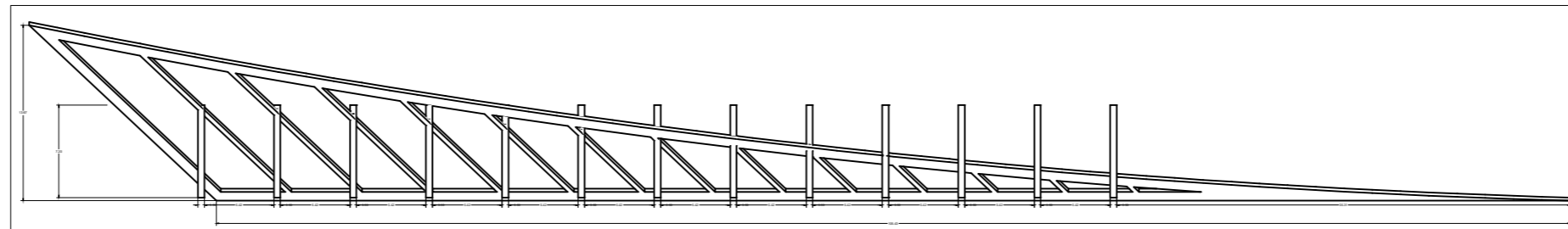


LUMINARIA TIPO FAROL
ESC: 1/25

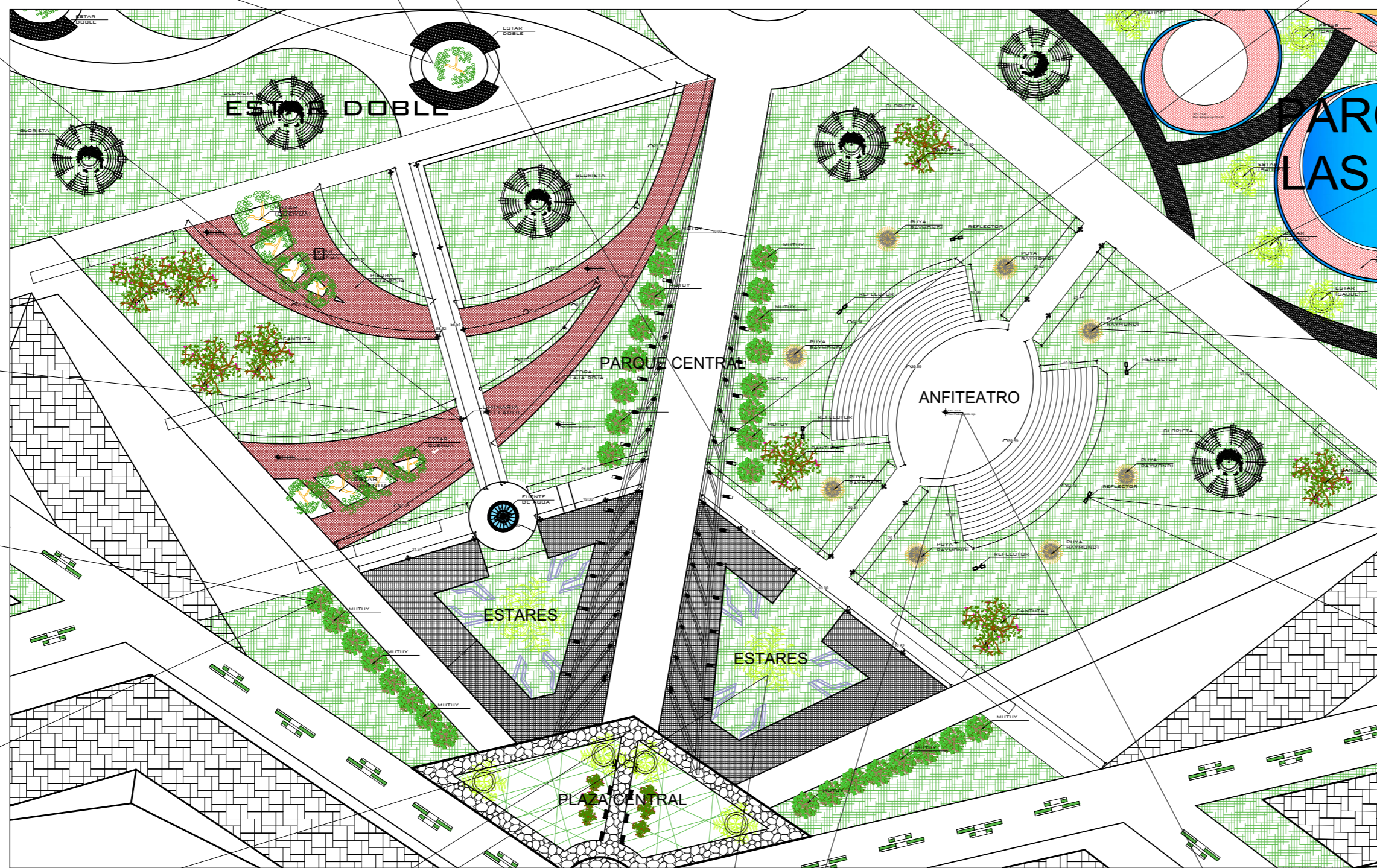
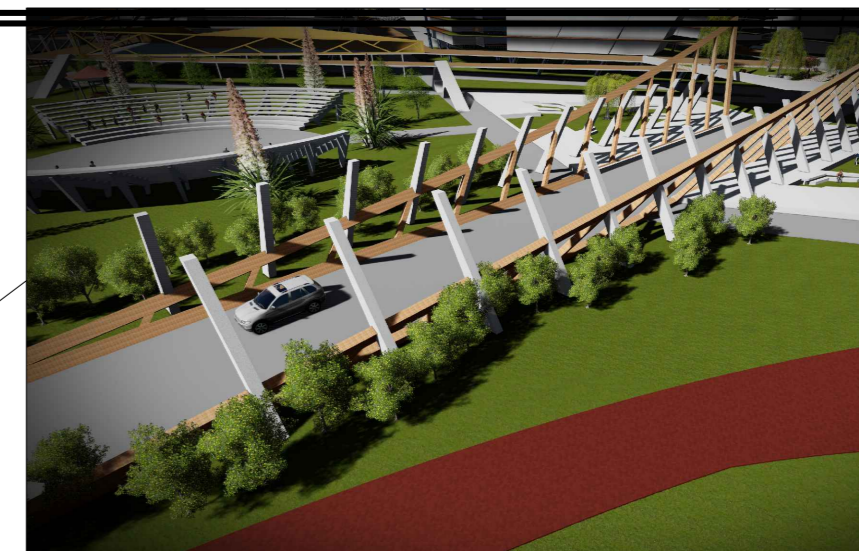


MUTUY

ALTURA: 2 M.
FUSTE: 20 CM.
M.S.N.M. 3400 A 5400

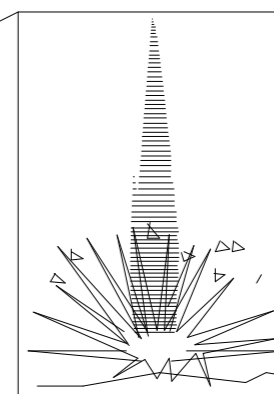


ESTRUCTURA CENTRAL



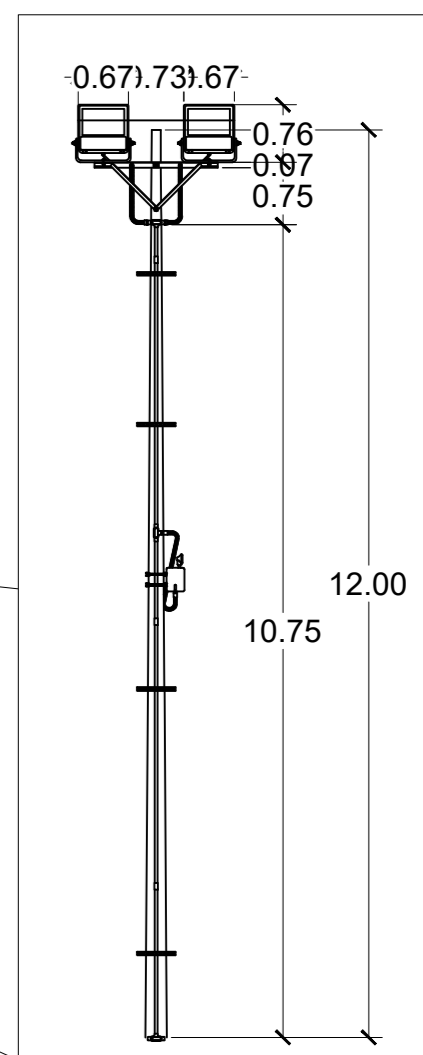
PARQUE CENTRAL

ESC: 1/800



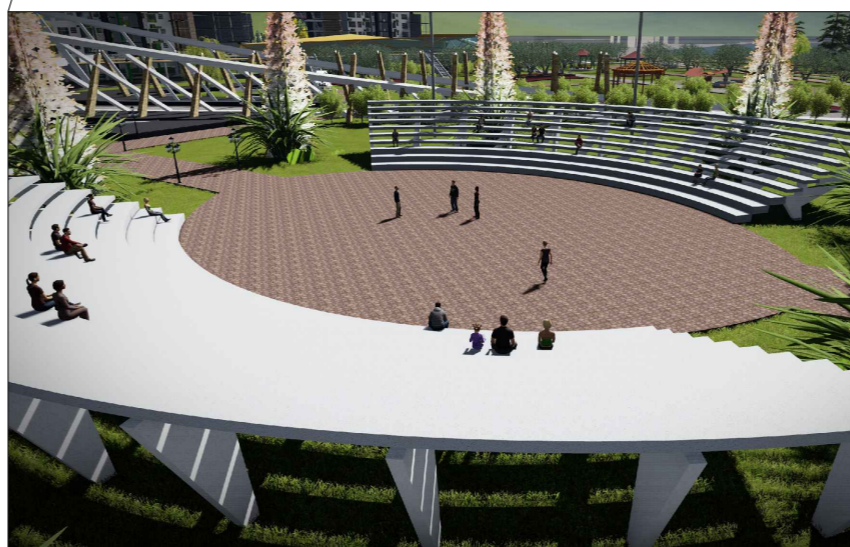
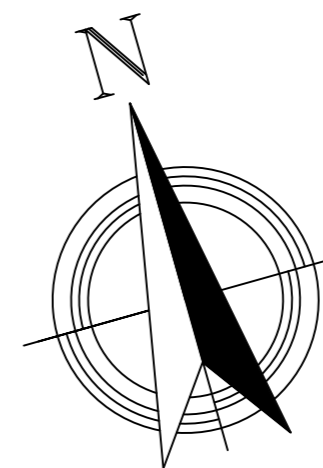
PUYA RAIMONDI

ALTURA: 6 A 10 M.
DIAMETRO: HASTA 2.50 M.
M.S.N.M. 3200 A 4800
HOJA: 1 A 1.2 M.



REFLECTOR

ESC: 1/25



PROYECTO:
PROPUESTA DE RENOVACION URBANA TURISTICA ECOLOGICA RECREACIONAL PARA INTEGRAR LA ISLA ESPINAR A LA CIUDAD DE PUNO

PLANO: PARQUE CENTRAL	LUBICACION: PUNO	LAMINA No: A-16
---------------------------------	---------------------	---------------------------

DISEÑO: BACH. ISKRA DIANA RIZALASO HUIACANI BACH. CARLOS JESUS COYLA LINARES	FECHA: S/F COD: 16/24	ESCALA: INDICADA
--	-----------------------------	---------------------