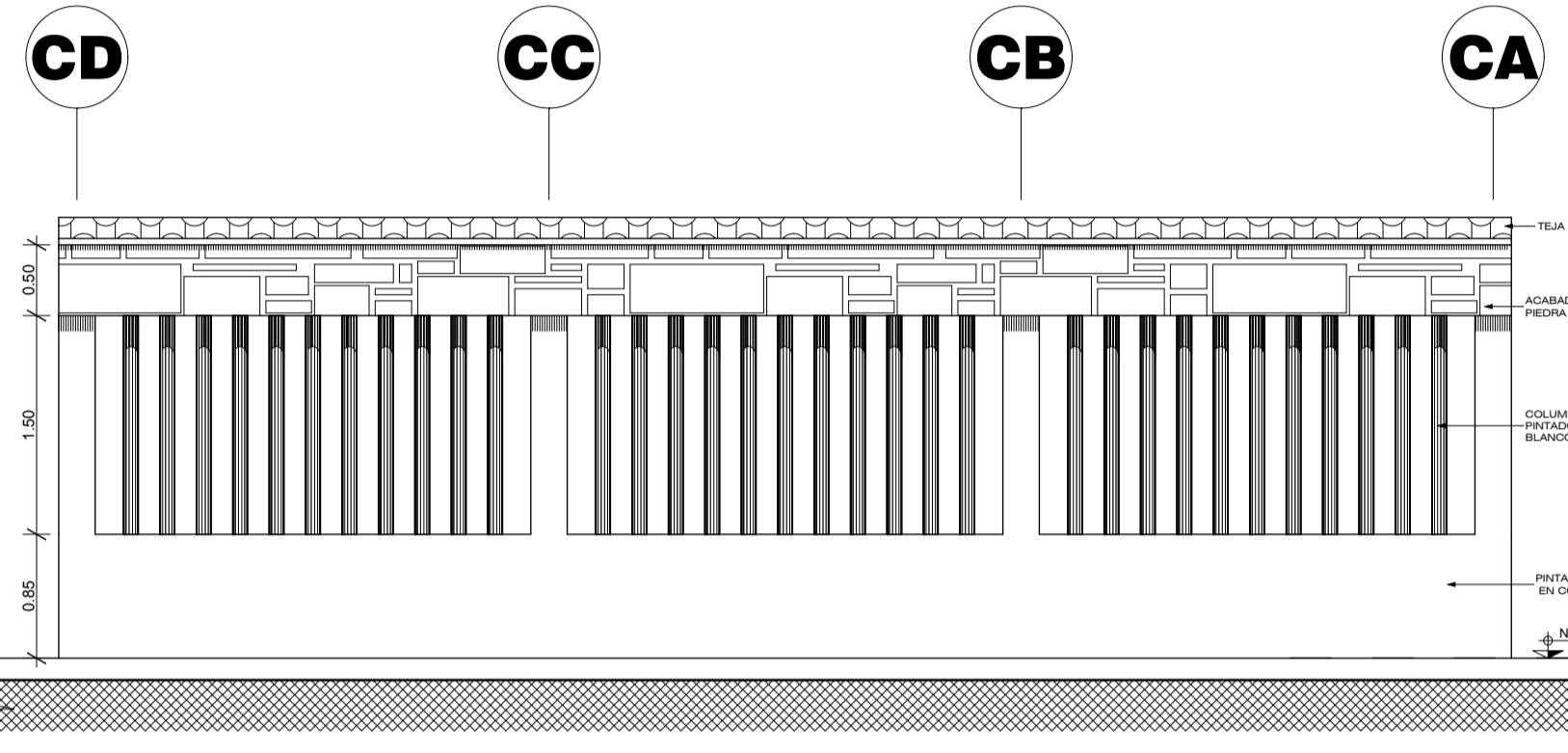


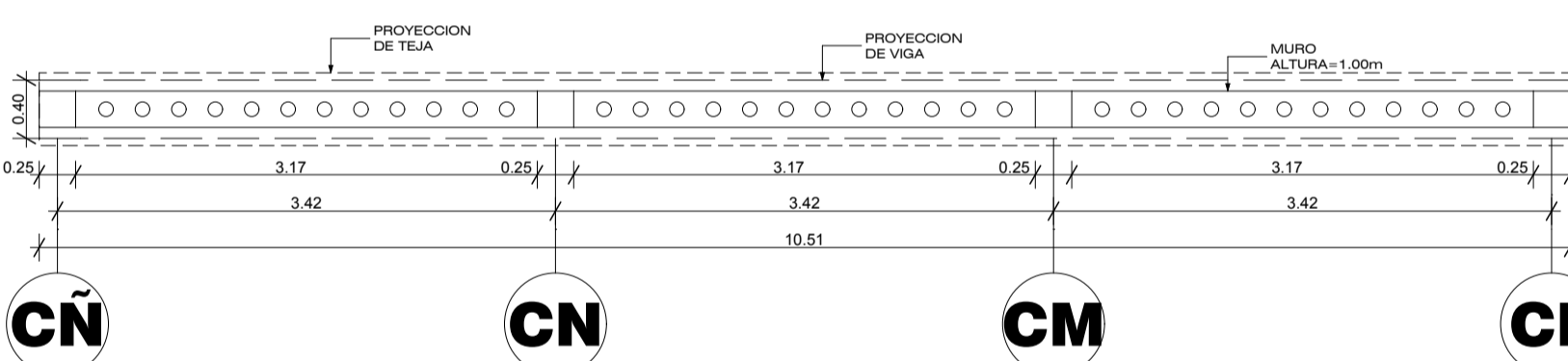
PLANTA MODULO 01

ESCALA 1:50



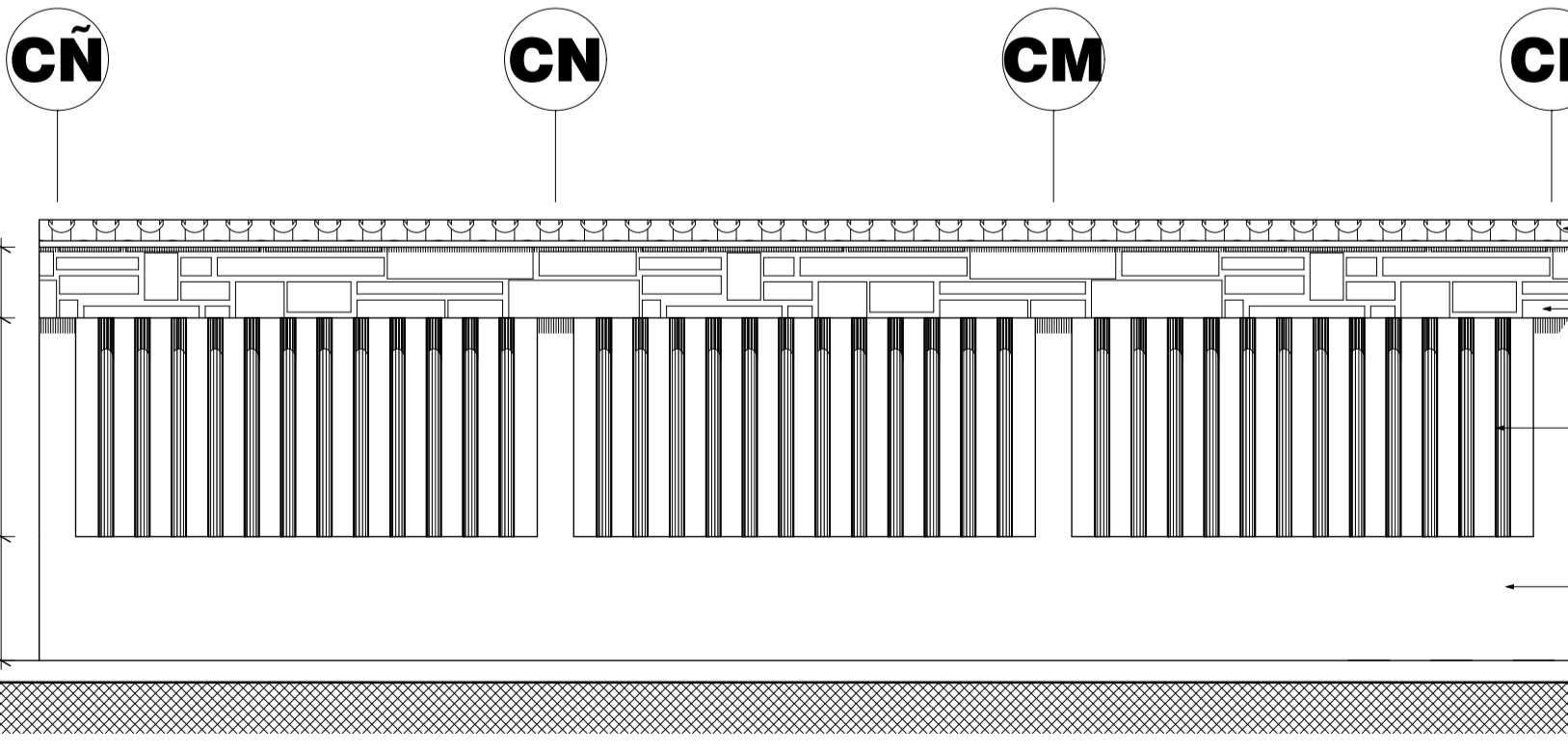
ELEVACION MODULO 01

ESCALA 1:50



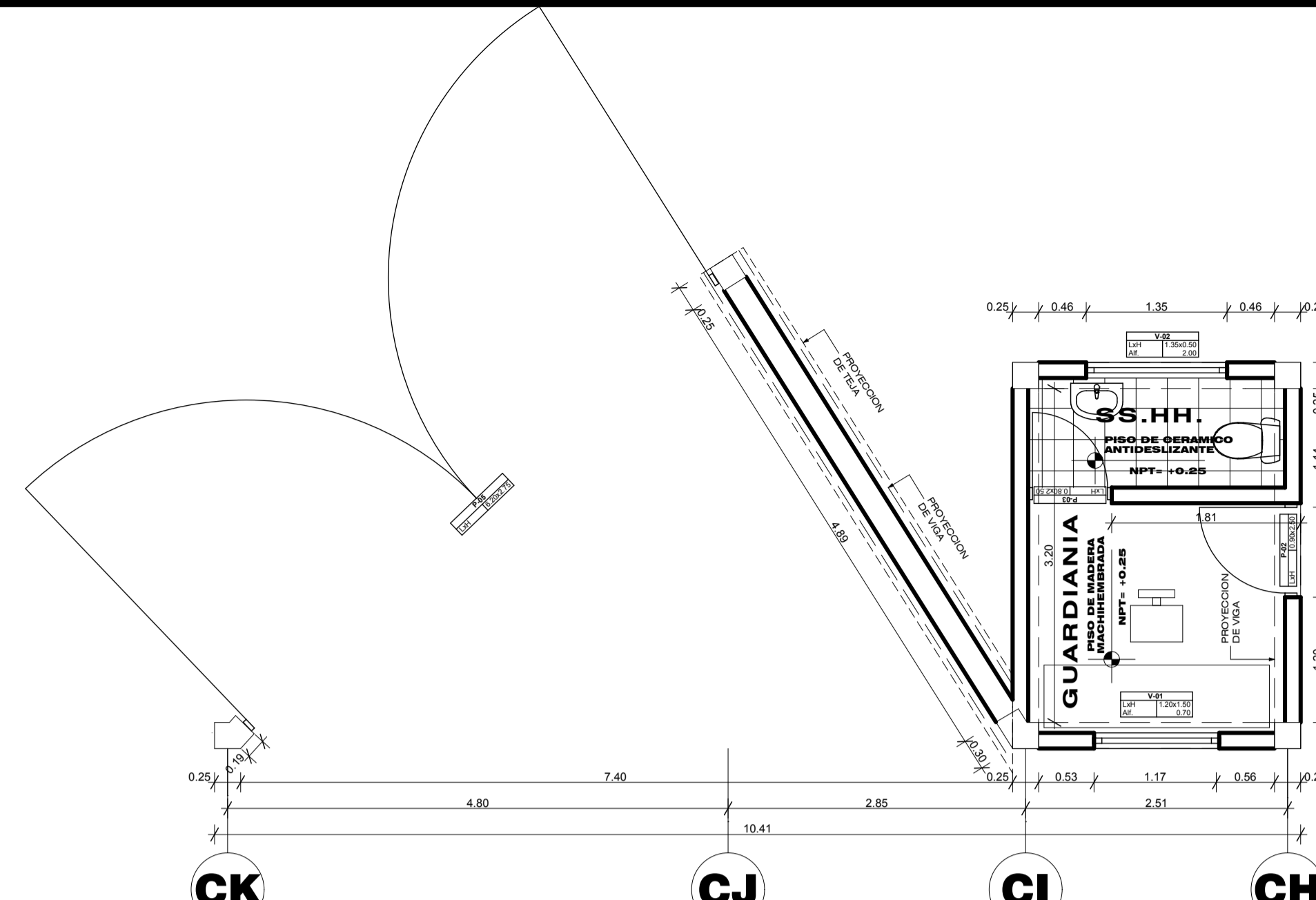
PLANTA MODULO 04

ESCALA 1:50



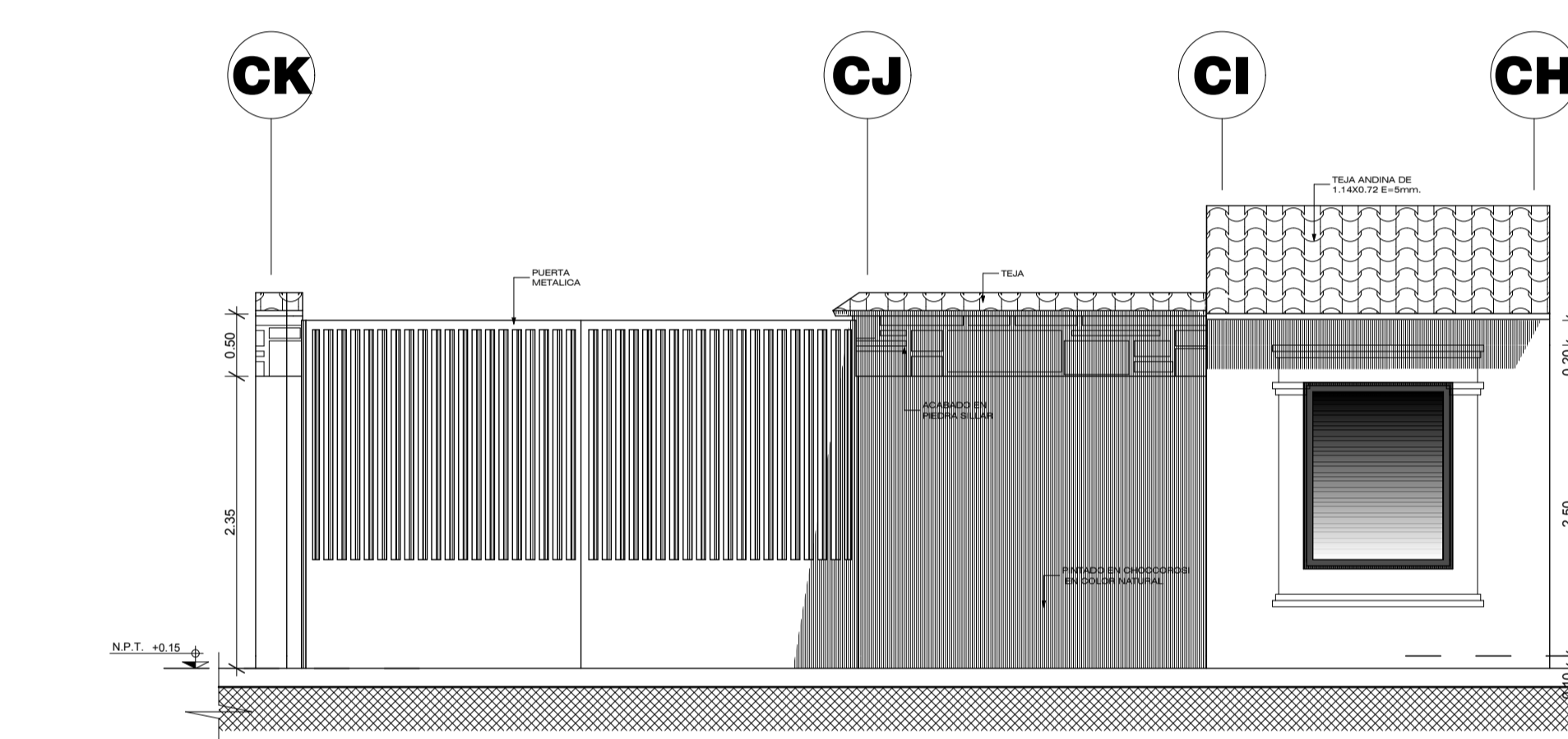
ELEVACION MODULO 04

ESCALA 1:50



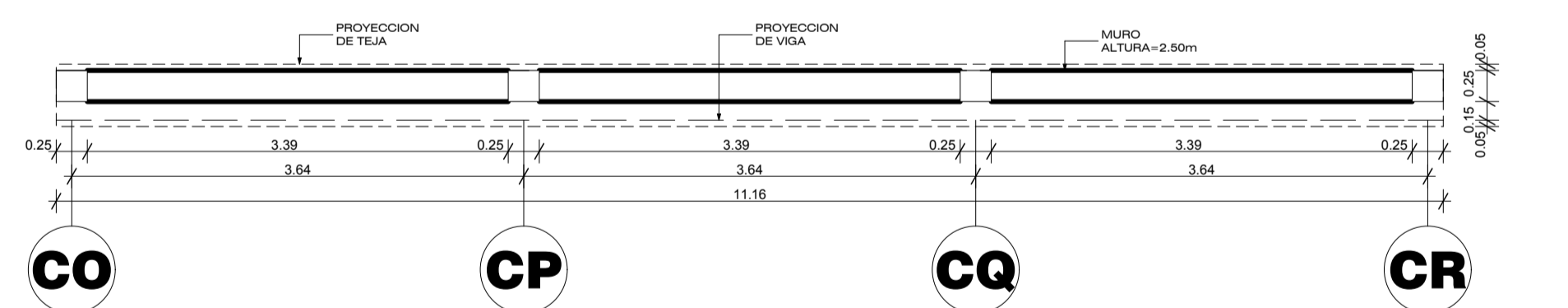
PLANTA MODULO 03

ESCALA 1:50



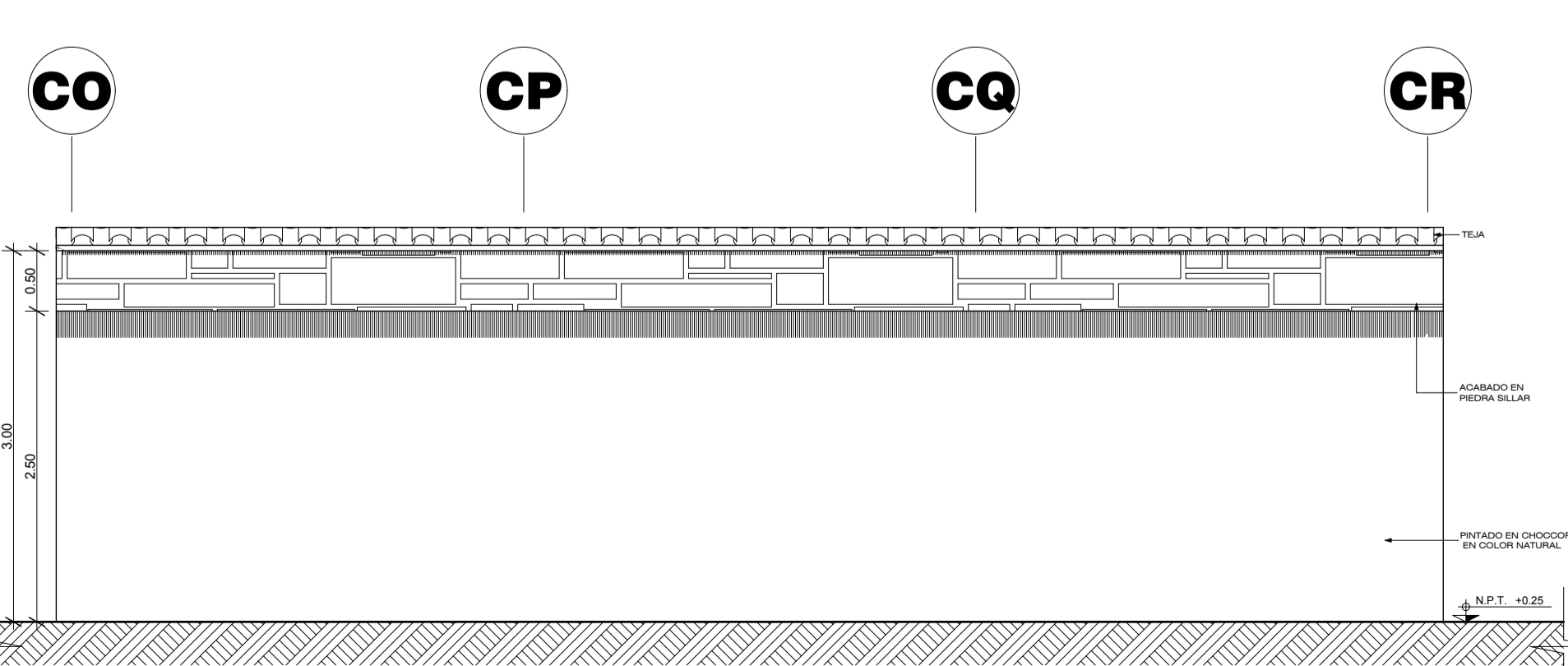
ELEVACION MODULO 03

ESCALA 1:50



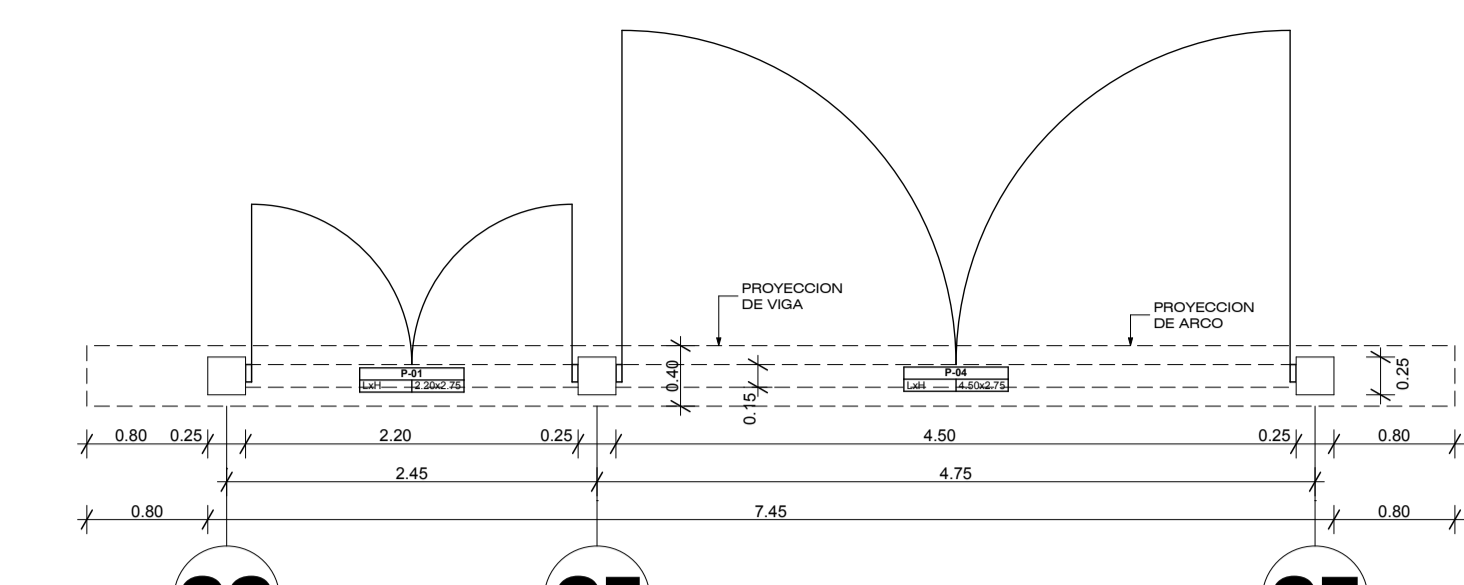
PLANTA MODULO 05

ESCALA 1:50



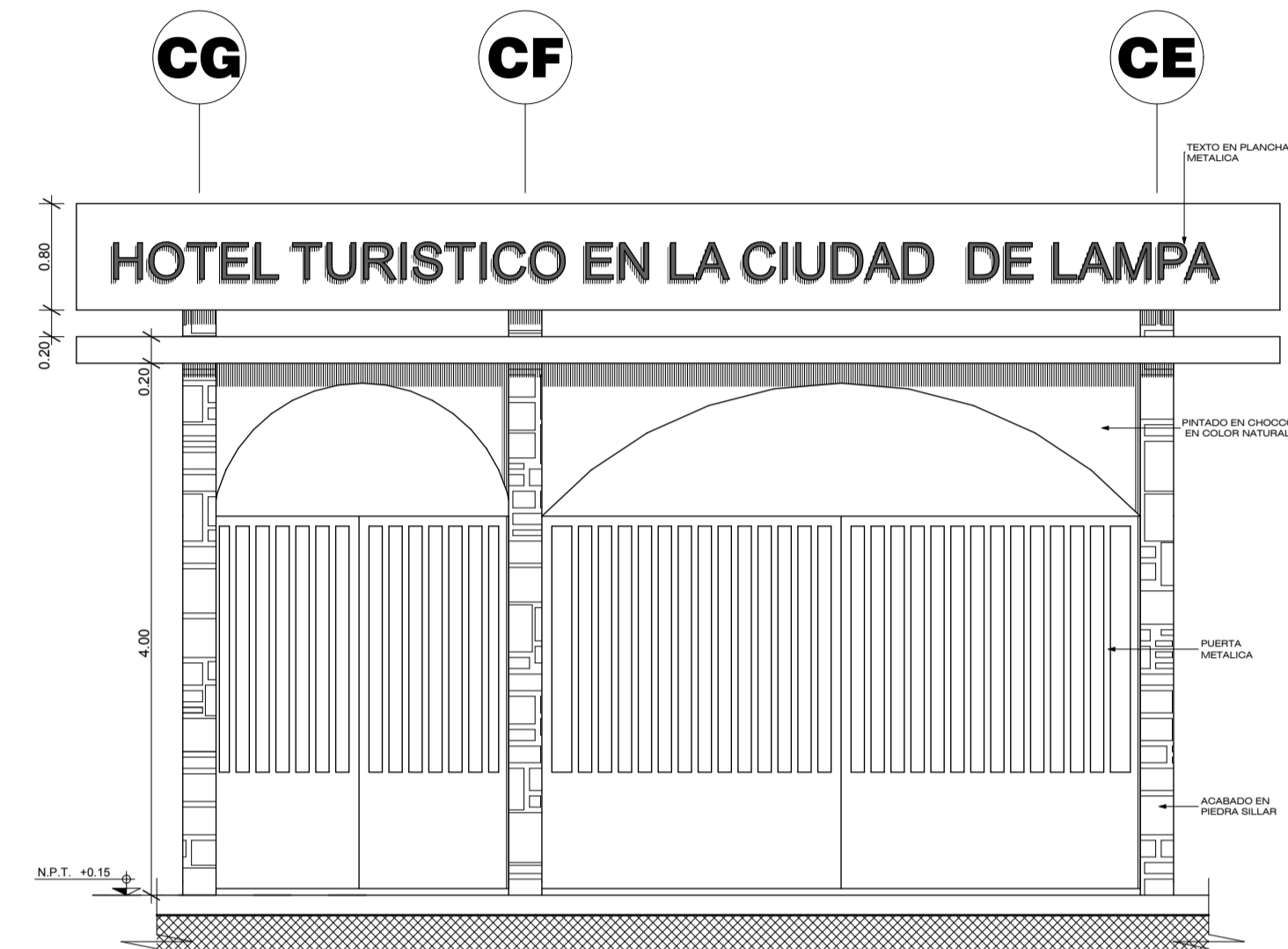
ELEVACION MODULO 05

ESCALA 1:50



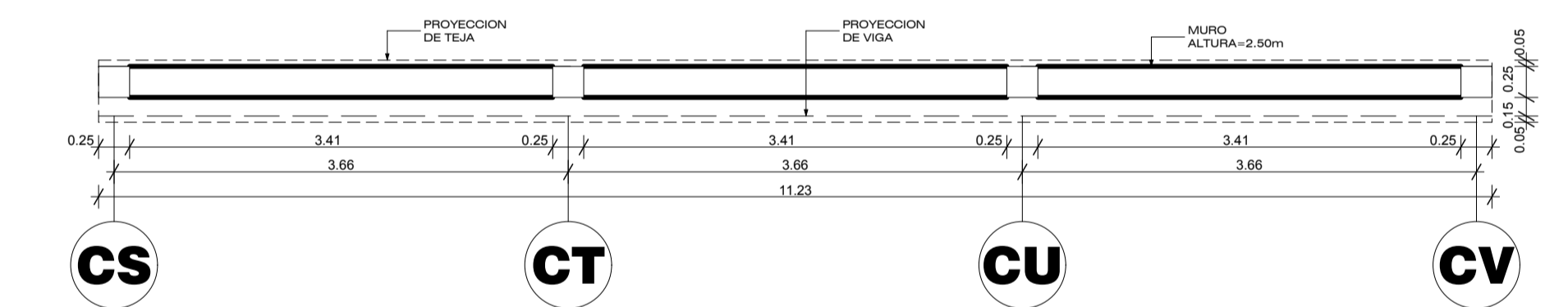
PLANTA MODULO 02

ESCALA 1:50



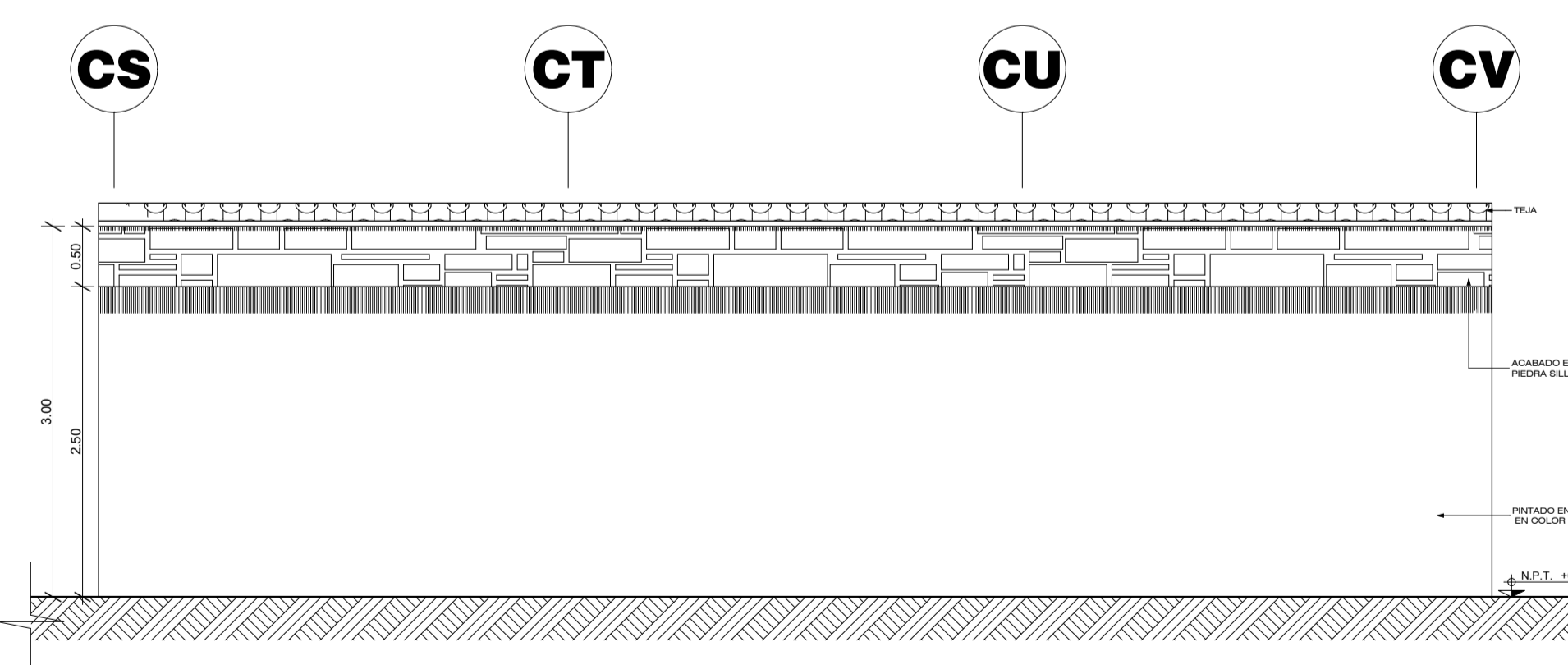
ELEVACION MODULO 02

ESCALA 1:50



PLANTA MODULO 06

ESCALA 1:50



ELEVACION MODULO 06

ESCALA 1:50

UNIVERSIDAD NACIONAL DEL ALTIPLANO
ESCUELA PROFESIONAL: ARQUITECTURA Y URBANISMO

PROYECTO DE TESIS :
"HOTEL TURISTICO EN LA CIUDAD DE LAMPA"

DISTRICTO: LAMPA
PROVINCIA: LAMPA
DEPARTAMENTO: PUNO

LAMINA: A-26

PLANCIA: CERCO PERIMETRICO

PRESENTADO POR:
BACH. ARTHUR SALAZAR MAMANI

ESCALA: INDICADA
FECHA: 2016